

VEKTA V60100R



Key Features

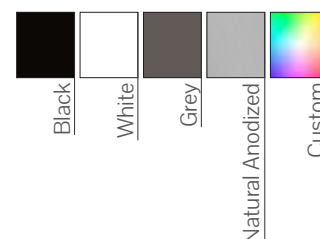
- Even light distribution
- Complies with relevant Australian Standards
- Diverse possibilities
- SELV LED Engine
- Emergency Options (On Request)
- Manufactured in Australia
- IP55 (On Request)
- Minimum 115mm depth for recessed bracket

Compliance



*Cyanosis compliant on request

Colour Options



Code

Example:

V60100R-R129030ODDO10-2400

Product Code	Mounting	Power #	CRI	CCT	Optics	Driver	Finish	Length
V60100R	R - Recessed Trim	12 - 12 W/m (1008 lm/m)	80 - CRI>80	30 - 3000K	OD - Opal##	DO - Non-Dim	10 - Black	- xxxx mm
Optional		16 - 16 W/m (1344 lm/m)	90 - CRI>90	35 - 3500K	Lx - Linear Lens	DA - Dali-Dim	11 - White	
V60100RIP		20 - 20 W/m (1680 lm/m)		40 - 4000K	Bx - Black	SW - Switch-Dim	75 - Grey	
		24 - 24 W/m (2016 lm/m)		50 - 5000K	Louvered ##	79 - Anodised		
		28 - 28 W/m (2352 lm/m)		TW - 2700-6500K	Wx - White	CU - Custom		
		32 - 32 W/m (2688 lm/m)			Louvered ##			
		36 - 36 W/m (3024 lm/m)			TR - Track			
		40 - 40 W/m (3360 lm/m)			MS - Mini Spot			

Luminous flux figures based on Opal, 4000K, CRI>90 version

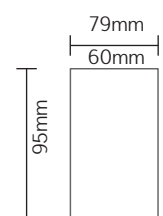
Code needs to be selected from a variant from the optics section

Mounting

Recessed Trim (R)



Dimensions





Optics

Louvers



B8 - Black Wide 80°
B5 - Black Medium 50°
B3 - Black Narrow 35°
BO - Black Oval 25 + 70°
BA - Black Asymmetric
W8 - White Wide 80°
W5 - White Medium 50°
W3 - White Narrow 35°
WO - White Oval 25 + 70°
WA - White Asymmetric

Linear Lenses



L6 - Linear Lens 60°
L9 - Linear Lens 90°
LO - Linear Oval 35° x 70°
LA - Linear Asymmetric
LD - Linear Double Asymmetric

Opal Diffusers



OD - Opal Diffuser
CD - Clear High Impact Diffuser (IK06)
HD - High Impact Opal Diffuser (IK06)

Track



TR - Track

Mini Spots



MS - Mini Spot