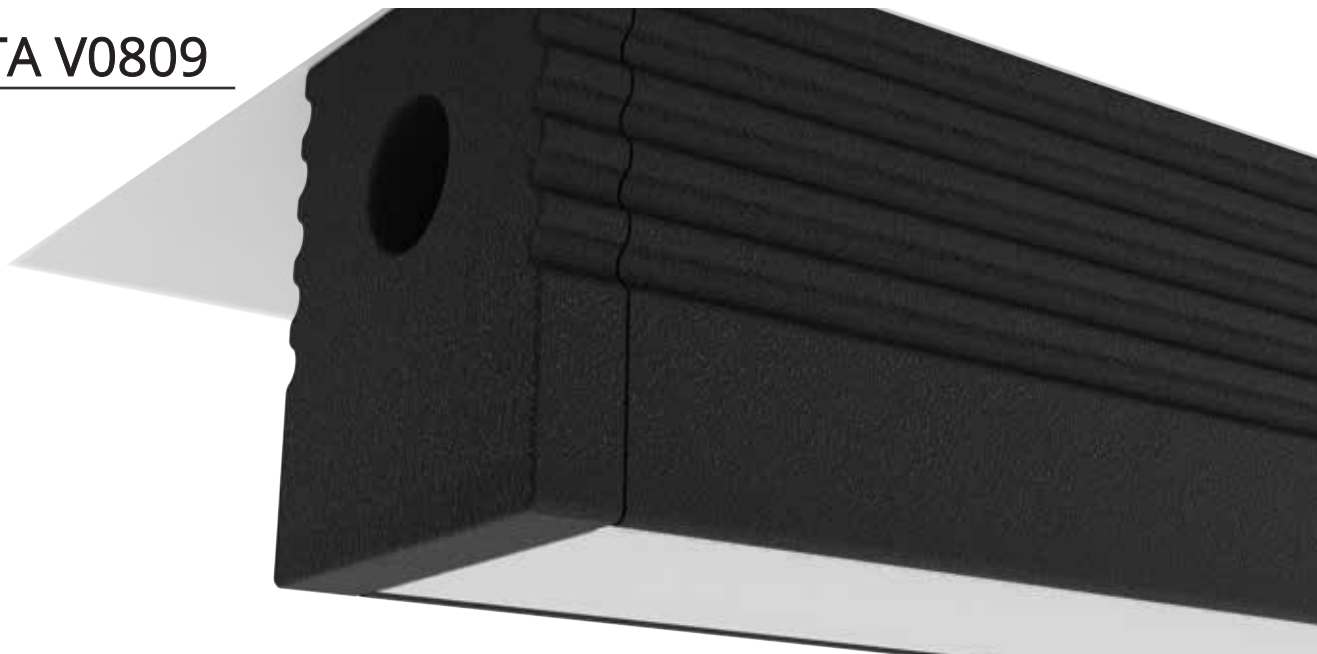


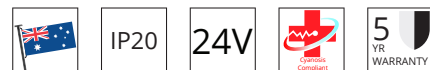
VEKTA V0809



Key Features

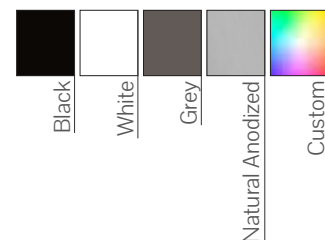
- Complies with relevant Australian Standards
- Diverse possibilities
- Small and compact with the envelope size 8mm x 9mm
- Supplied with all mounting components
- Remote Driver

Compliance



*Cyanosis compliant on request

Colour Options



Code

Example:

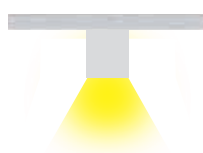
V0809-S079027ODDO10-2400

Product Code	Mounting	Power #	CRI	CCT	Optics	Driver	Finish	Length
V0809	S - Surface Mount	07 - 7.2 W/m (309 lm/m) 12 - 12 W/m (515 lm/m)	90 - CRI>90 95 - CRI>95	27 - 2700K 30 - 3000K 40 - 4000K	OD - Opal	DO - Non-Dim DA - DALI-Dim SW - Switch-Dim CA - Casambi	10 - Black 11 - White 75 - Grey 79 - Anodised CU - Custom	- xxxx mm

Luminous flux figures based on Opal, 4000K, CRI>90 version

Mounting

Surface Mounted (S)



Mounting Clip



Dimensions

