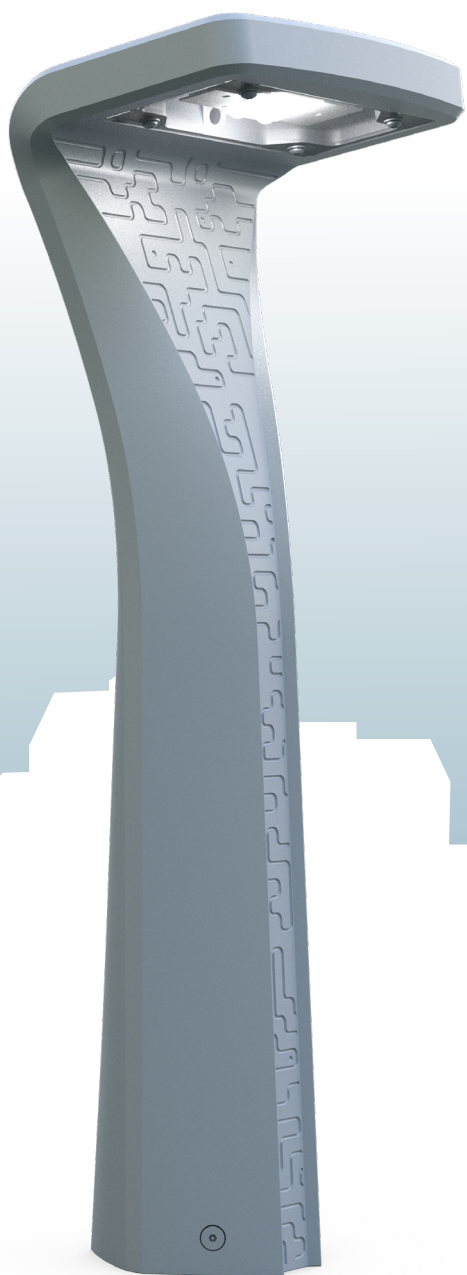
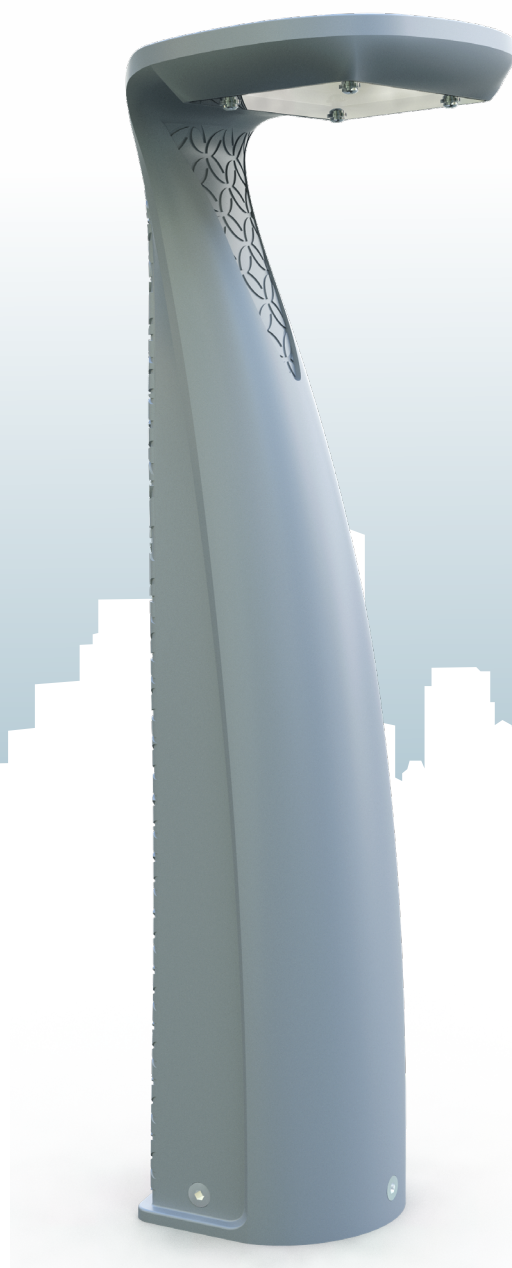


# VENGO & VENGA BOLLARD

Design: ECLATEC



VENGO (PRM\*)



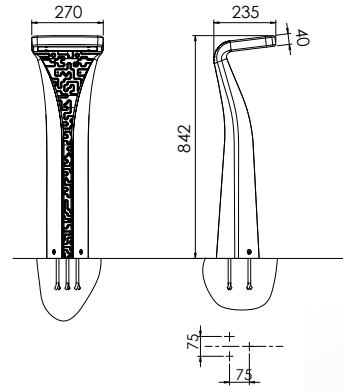
VENGA (PRM\*)

# VENGO VENGA

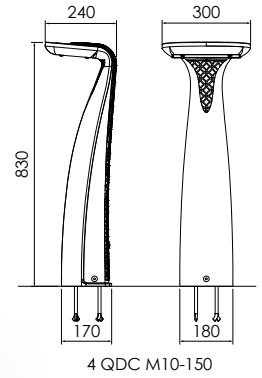
Design: GHM



VENGO



VENGA



## DESCRIPTION

Product name	VENGO	VENGA
Housing	Lighting head and module in die-cast aluminium Metalized cast iron bollard	
Bowl	Polycarbonate	
Finish	Polyester powder coating, any colour available	
Impact protection	IK 10	
Ingress Protection	IP 66 Module	
Dimensions (dia x h)	235 x 270 x 842 mm	240 x 300 x 830 mm
Weight	31kg with base 35kg without base	37kg with base 41kg without base

Watts/lumens

## INSTALLATION

Internal fixing using 3 anchor rods, M10  
Possibility on base plate with center distance 200 x 200 mm

## MAINTENANCE

Opening and closing The LED module can be accessed by removing the bowl. Access to the equipment is through the inspection hatch.

## CONTROL OPTIONS

VENGO/VENGA bollard by Eclatec represents the latest in control systems, both centralised and decentralised. Adjustable current on the driver or at the bottom of the pole. Dimming as above as well as via bluetooth.

The bollard supports remote detection. VENGO/VENGA also supports DALI protocol. When used with a local network, communication can be detected with a pilot wire and/or wireless communication sensing. Remote management via WIZARD CMS system.

## SOURCES & PHOTOMETRIC DISTRIBUTIONS

VENGO / VENGA	
Sources	BLS 8
Colour temperature	2200 K, 2400 K, 2700 K, 3000 K, 4000 K
Optical Distribution	QUADRALENS: EAH, ERS
Backlight shield option	Medium or strong cut-off
Power supply current	Adjustable up to 700 mA <sup>0</sup>

E/L/P: Lighting/Luminance/Projection, R/C/T/F/P: Road/Circular/Pavement/Beam/Zebra crossing, E/S/L/A/D/G: Narrow/Standard/Wide/Asymmetrical/Right/Left

