



FÖS

l i g h t i n g

Retail & Presentation

foslighting.com.au

FOS Lighting

THE FOS EXPERIENCE

FOS Lighting has an experienced engineering and design team who understand the architectural landscape of the lighting sector and its clients, while a dedicated manufacturing team brings cutting edge solutions to market. With quality and experience, FOS Lighting manufactures and distributes a complete selection of quality luminaires and lighting control systems to the following sectors:

- Office & Communication
- Science & Education
- Art & Culture
- Industry & Engineering
- Transport & Environment
- Adverse & Custodial
- Living & Lifestyle
- Retail & Presentation
- Care & Health
- Leisure & Entertainment
- Sports & Recreation
- Experience & Advertising
- Urban & Architecture
- Wellness & Hospitality



FOS QUALITY

FOS Lighting is a proud manufacturer and exclusive distributor of cutting-edge luminaires within Australia and New Zealand. With our integrated distribution and manufacturing facilities in Melbourne and Brisbane, we can provide a lighting solution from concept to delivery. FOS Lighting is known for its outstanding workmanship, quality, and getting the job done - its International ISO 9001:2015 accreditation is testament to this.

FOS
lighting



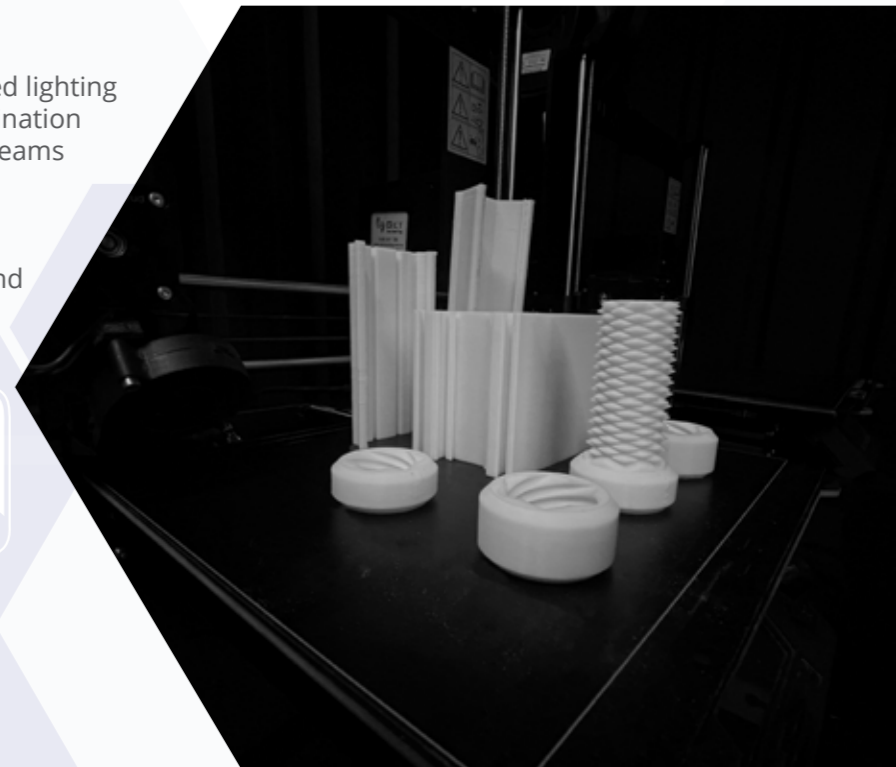
THE FOS WAY

FOS Lighting is a solutions driven, innovative lighting and controls business using in-house experience and engineering coupled with manufacturing facilities in Australia. Working closely with key account customers, its project lighting solutions business is based on innovative lighting concepts using leading edge technology to generate new levels of impact in both design and function.

FOS Lighting is highly regarded in the market for its knowledge of the lighting industry, this is made possible with its committed, highly talented and motivated team members, that continuously strive to provide the highest quality of product and service in the Australian and New Zealand market.

FOS - WE DELIVER

FOS Lighting is dedicated to achieving the desired lighting solution for all lighting requirements. The combination of our experienced research and development teams leveraging the power of the latest technology in 3D modelling programs, and reliable delivery of materials from our trusted and dependable suppliers allow us to meet client expectations and deliver on time.





Contents

FOS Lighting	2
Solution Centre	6
The Importance of CRI	8
Facade Lighting	10
High Traffic Areas	14
Store Fronts	18
Retail Space	22
Boutique & Fitting Rooms	26
Showcase Lighting	28
Supermarket	30
Sales & Reception	34
Storage & Cold Rooms	38
Amenities	42
Carpark	44
FOS Projects	48

Solution Centre

Retail comes in many forms, from regional shopping centres hosting luxury goods boutiques and large supermarkets to mom and pop dairies, they all require effective lighting solutions. Lighting has to serve a dual purpose of helping clientele negotiate the space and drawing attention to specific products on display. The lighting must ensure that various categories of produce and merchandise are displayed at their best potential. The need for ideal lighting becomes more essential as a product category moves into the luxury range as well as those categories where competition is more intense.

Store Fronts



Carpark



Boutique & Fitting Rooms



Retail Space



Facade Lightina



Storage & Cold Rooms



Showcase Lighting



Sales & Reception



High Traffic Areas



Supermarket



Amenities

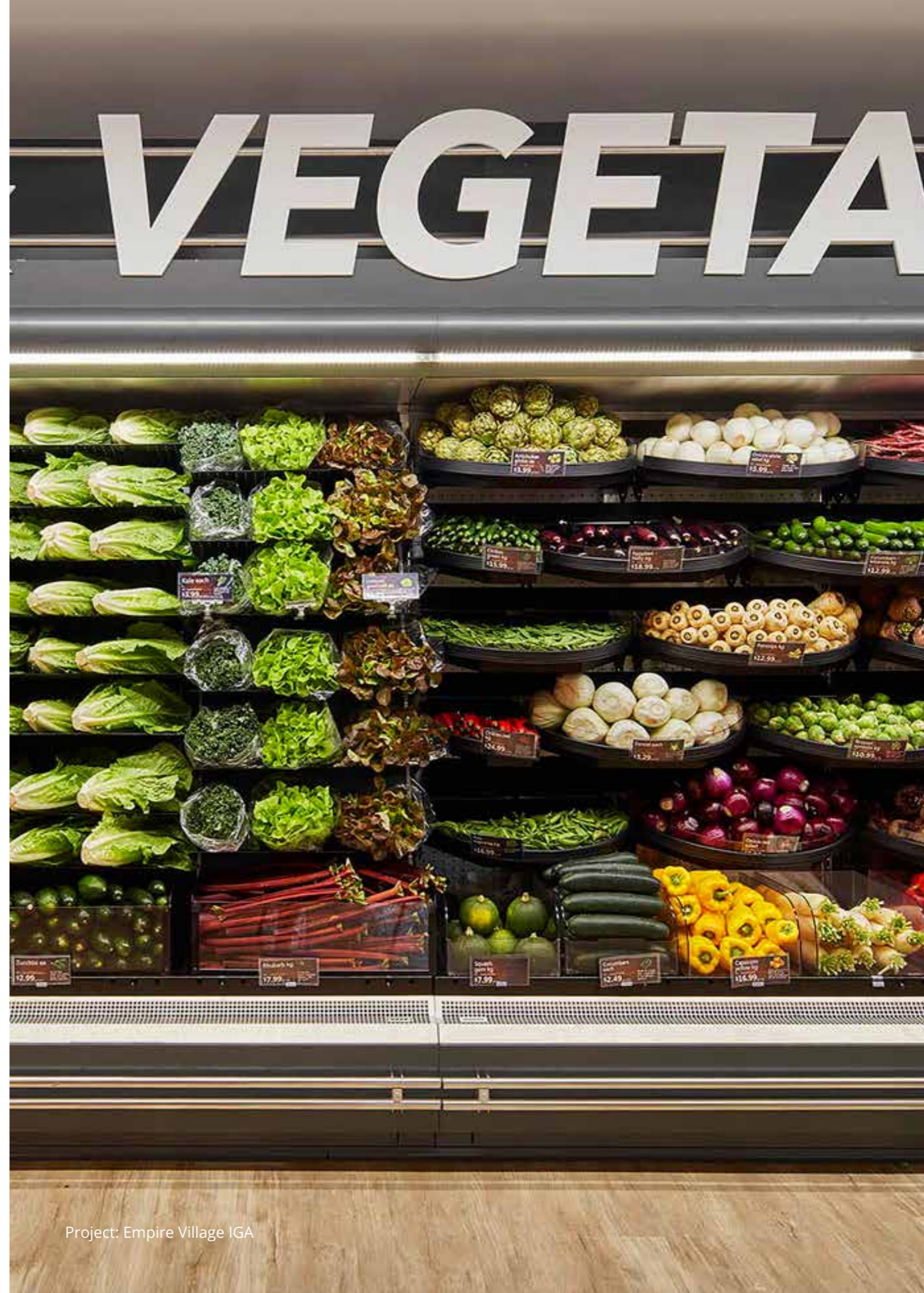
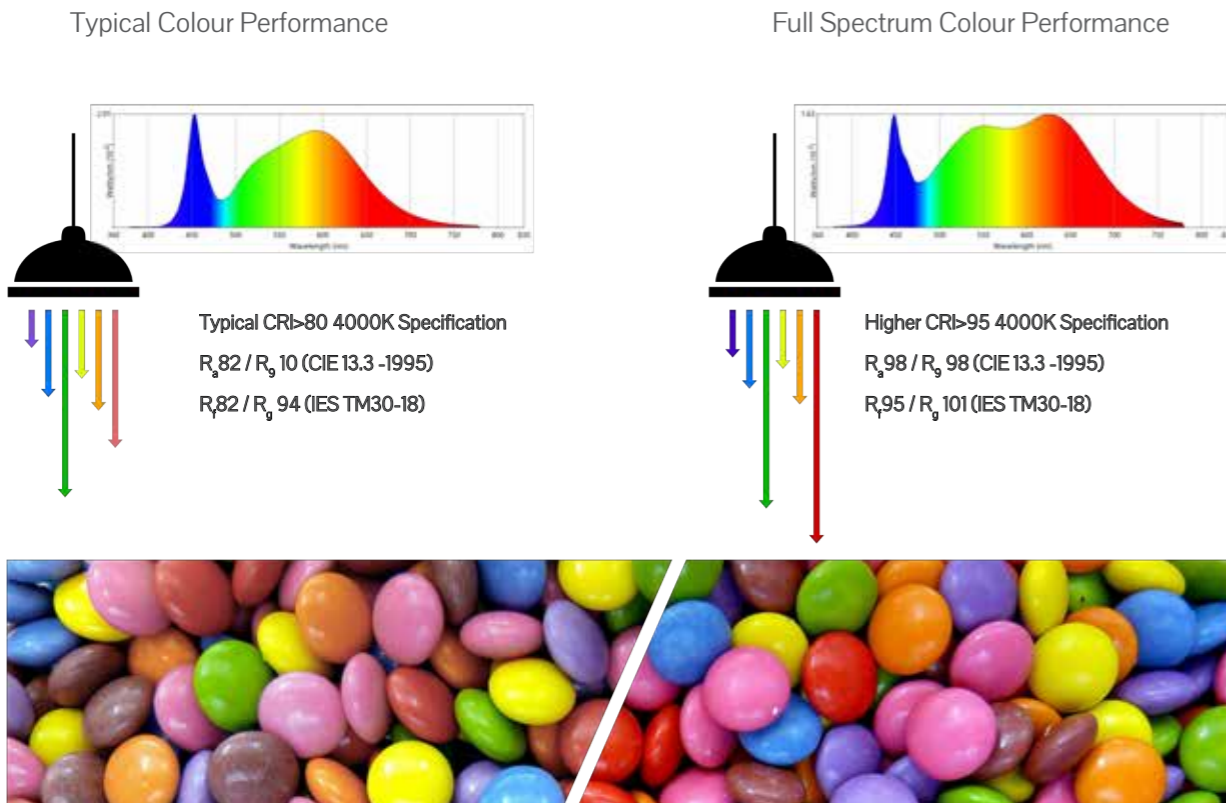


The Importance of CRI

Colour rendering is a direct function of the spectral composition of light. Commercial LED natively emits in the blue part of the spectrum, phosphor layers within the LED package are used to absorb some of this light and re-emit it in other parts of the spectrum to produce what we know as 'white' light. Those phosphors have typically been configured to produce white light with maximum efficacy, but that efficacy is achieved at the expense of spectral coverage - especially at the red end of the visible spectrum.

FOS Lighting carries several brands that provide Colour Rendering Performance of $R_a \geq 95$ and $R_g \geq 75$ indicating exceptional colour performance in relation to natural daylight. With the increasing understanding of the biological impacts of our artificially-lit environments on general health and wellbeing, lighting design is focusing on more than just task-based illuminance requirements. Research into the photoreceptors in the eye and their linkages to hormone secretion demonstrates that the body responds particularly strongly to light in a relatively narrow part of the spectrum (with a peak sensitivity around 480-490 nm), which - perhaps unsurprisingly - corresponds to sky-blue hues. The response is linked to the production and suppression of melatonin, which itself is a key factor in sleep and alertness cycles.

For retail environments the ability to render lighting that is close to daylight has a two-fold benefit. Firstly, the increased suppression of melatonin implies increased excitement and ability to concentrate on the part of patrons and staff. In addition, it helps with the display of products as the colour performance of the light source will have a significant impact on how the colours of products - both in relation to fashion and fresh and packaged produce, is perceived. This in turn will have a significant impact on motivating patrons to purchase and visit the store as being in the environment is psychologically pleasant and colours are more vibrant.



Project: Empire Village IGA



Project: Woolworths Carpark

Facade Lighting

The Awareness

When you think retail, you think shops, but lighting for the retail sector is a lot more than just illuminating products in an appealing way. On a large scale, the illumination of the Shopping centre façade creates a visible landmark and is the first and biggest aspect that any shopper sees. Get this wrong and the shopping centre is already reducing its overall appeal to potential shoppers. The introduction of computer-controlled RGBW projectors have expanded façade lighting to include elements of animation which further serves to differentiate the structure from its environment and add an element of excitement that will serve to attract additional traffic to the centre.

The success of a shopping centre is directly correlated to the ability to attract feet in the door. FOS Lighting can help with illuminating everything from small architectural features of a shopping centre façade to wall washing entire frontages.



MEGABAY - Viento

Viento is a powerful linear system, which emits uniform light. It combines exceptional quality, innovation, and technology.



Features

- IP68.
- Sleek anodised aluminium finish.
- Selection of optics.
- White or RGBW.
- Quick installation.

SECURLITE - Rondino

Surface or flush mounted, an extremely robust architectural luminaire.

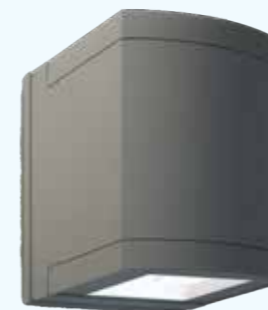
Features

- IP66.
- IK11.
- 120 joules resistance.
- Die-cast marine-grade aluminium base.
- Opal polycarbonate diffuser.
- Stainless steel vandal-resistant screws.
- Various Grill kits available.



FORMALIGHTING - Astra

A modern luminaire which highlights and accentuates architectural features.



Features

- IP65.
- Weatherproof durable silicone gaskets.
- Easy installation.

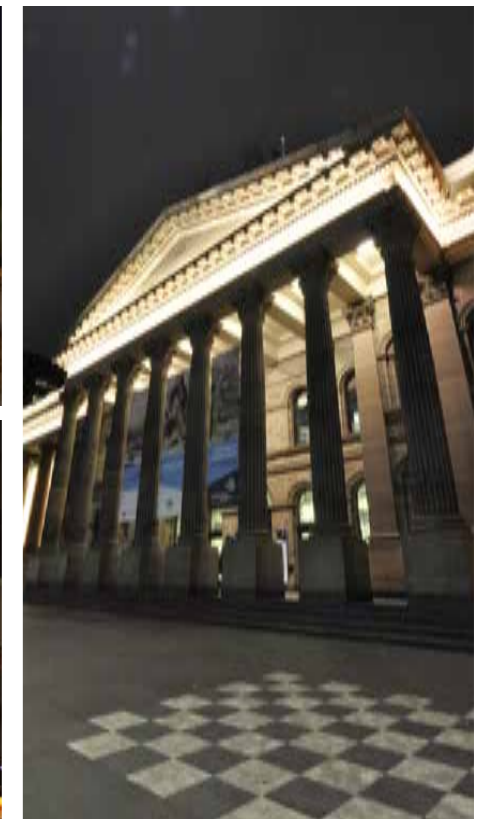
FORMALIGHTING - Bullet

Bullet is a versatile recessed, wall or ground mounted luminaire, which allows you to highlight architectural or ground features.

Features

- IP66.
- 140 degrees vertical tilt.
- 350 degrees horizontal rotation.
- Weatherproof durable silicone gaskets.
- Narrow, medium & wide optic options.







Project: Chadstone

High Traffic Areas

Lighting the way

Once a customer is inside the shopping centre, the lighting needs to support way finding and provide the required level of background illumination as well as increased light levels that will serve to act as a means to highlight potential hazards such as stairs and slopes.

Luminaires need to offer a clear guidance for customers to wander the stores or have a clear path to the store to which they are heading. The lighting design has to be of such a nature that while it provides light levels compatible with wayfinding, it does not provide competition and distract attention away from the illumination in stores and window displays. It needs to create ambience and be functional. NZS7603 recommends that covered shopping precincts and arcades are lit with light levels that vary between 100 – 200 lux at floor level with some glare management (UGR<22), while the lighting in stores should be at around 500 lux (UGR<19) measured at the level of the merchandise display.

FOS Lighting have a range of efficient and powerful fittings which can achieve even illumination over large areas.



MEGABAY - Viento

Viento is a powerful linear system, which emits uniform light. It combines exceptional quality, innovation and technology.



Features

- IP68.
- Sleek anodised aluminium finish.
- Selection of optics.
- White or RGBW.
- Quick installation.

AQUA CREATIONS - Code 130°

Code 130° is a collection of handcrafted silk suspended luminaires, which can be as unique as you want it to be.

Features

- 15 different fittings.
- Up to 16 colours for single fittings.
- Unique designs



VEKTA - V60100

VEKTA V60100 provides a breadth of opportunity for lighting creativity with its wide variety of options and customisation features.



Features

- Emergency options available on request.
- Welded joints on request.
- Available optics include: Opal Diffuser, various Linear Lenses, Track, Louvered & Mini Spots.
- Surface, Suspended, Recessed & Wall mounted options available.

VEKTA - VMB1818

VMB1818 is VEKTA's vertical and horizontal bending fitting.

Features

- Minimum bend radius 250mm.
- 2200K to 6500K colour temperature options.
- Driver options include: Non-Dim, DALI, Switch-Dim, Casambi.
- Max 5m in a single direction.
- IK08.
- IP68.







Project: USCARI

Store Fronts

A store's business card

Now that a customer is within the shopping precinct, store fronts become our next focus. Lighting an entrance may take a couple of downlights, however lighting it so the customer says "wow, lets go in here", is another ball game. With a series of micro spots and linear solutions, FOS Lighting can provide luminaires to make the shop entrance stand out from the rest as well as illuminate their display windows.

In addition to higher levels - roughly 500 lux according to NZS 7603, the illumination within a store and display windows needs to manage glare well with a targeted outcome of UGR<19. The control of glare is essential to ensure that customer attention is focused on the merchandise and the ambience that the store wants to create rather than be distracted and made uncomfortable by bad lighting design and implementation.



LJUSEDESIGN
Arty Accent

FOMRALIGHTING
TicTok

FORMALIGHTING
Zero - Low Voltage

FORMALIGHTING
Zero Projector

FORMALIGHTING
Zero projector - Low Voltage

FORMALIGHTING
Iride

PIXON TECHNOLOGY
XON Series



LJUSEDESIGN- Arty Accent

The Arty Accent is a compact spotlight, designed to take on a variety of situations.

Features

- Dimmable from the wall or the app.
- Built in dimmer from 0-100%.
- Interchangeable lenses.
- 4W,6W,8W & 10W options available.
- CRI > 90.
- 2700K, 3000K, 4000K.
- Very Narrow, Narrow, Medium, Wide & Elliptical optics available.
- Swivels 365° & Tilts 90°.

FORMALIGHTING - Zero-Low Voltage

Zero - Low Voltage is a 48V Low voltage spotlight. With a variety of options it makes it an excellent choice for highlighting mannequins or products within the window.

Features

- CRI > 90.
- CCT Options: 3000K, 4000K, Tunable white.
- Super Narrow, Narrow, Medium & Wide beam angles available.
- Accessories include: Coloured filters, Linear Spread, Honeycomb louvre, Visor, Anti Glare Tube.
- 40mm, 66mm and 100mm variants.



FORMALIGHTING - Zero Framing Projector

The Zero framing projector 85 is a unique fitting perfect for shop windows, due to its dimming and adjustable beam angle capabilities.

Features

- CRI > 97.
- Track Mounted Fitting.
- 3000K or 4000K Options available.
- 1587 delivered lumens (3000K) or 1757 delivered lumens (4000K).
- 0-90 degree vertical adjustment.
- 350 degree horizontal adjustment.
- Black or white finish options.

FORMALIGHTING - Iride

Iride is a adjustable recessed downlight, perfect for display windows and shop fronts.

Features

- CRI >90.
- Driver options: Non-Dim, Phase Dim, 1-10V, DALI, Casambi or No Driver.
- 3000K or 4000K options available, Tuneable white available on request.
- Black or White finish.
- Accessories include: Coloured Filters, Linear Spread, Honeycomb Louvers.







Courtesy of: Formalighting
Project: Patchi - Chocolate Gourmet Treats

Retail Space

Products at their best

Retail space covers a host of design concepts depending on the nature of the merchandise – ranging from automobile showrooms to boutiques selling handbags. The lighting should be designed to display the item at its best, as this is how retailers find a competitive advantage. This addresses not just lighting levels but also the colour of the output of the luminaire and how it complements the type of produce on display.

The NZS 6703 recommendations indicate that depending on the nature of the display 500 lux vertical and horizontal should be the target for the illumination of merchandise. This permits it to “pop” out of the background illumination. The use of directional spot lights on tracks, as well as adjustable downlights permit layout changes within the store in accordance with seasonal changes in products. Some luminaires permit the light to be adjusted in multiple dimensions, spread, angle, output as well as various accessories designed to assist with cut-off as well as glare management.

The use of motorised luminaires adds a further dimension of flexibility to the lighting solution and addresses the possibility of Health and Safety hazards associated with the re-arrangement of merchandise displays.



FORMALIGHTING - Cobra Flex

Cobra Flex is an exceptional linear product as it allows for light to follow the contours of architectural features within a room.

Features

- CRI > 75 or 90.
- CCT Options: 2100K, 2400K, 2700K, 3000K, 3500K, 4000K.
- U Mounting bracket.
- Beam angles include: 10°, 17°, 20° & 15° x 50°.
- Accessories include Honeycomb lens & coloured filters.
- Finish options include Black, White, Brass & Gold.

FORMALIGHTING - Teatro

Ultra-miniature track system perfect for retail display illumination.

Features

- Teatro 12, fixed elliptical beam options, available as twins, single surface and pendant options.
- Teatro 30, has a zoom option from 8° to 80°; a variety of filters, also honeycombe and barn doors with magnetic fixing, up to three at a time.
- Two integrated dials enable easy adjustment of the beam angle and lighting intensity.
- With a horizontal rotation of 330° and a vertical range of 0° to 90°, Teatro is an incredibly flexible and versatile solution.



FORMALIGHTING - TicTok

Energy-saving, track mounted on a main voltage 3 phase track system, with integrated driver in the track adaptor - the focus is on eco-friendly design and modularity.

Features

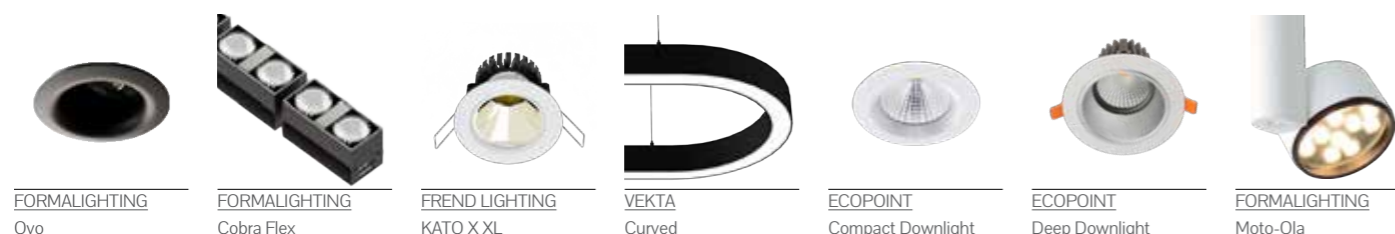
- TicTok's toolless, interchangeable LED module facilitates design flexibility and ease of on-site maintenance.
- Designed to be the perfect solution for accent lighting in sustainable lighting design schemes for retail.
- CCT Options: 2700K, 3000K, 4000K (Standard), 5000K.
- Available in three different adjustable light head sizes Ø45, Ø58 and Ø75mm, with versatile aiming angle tiltable 0° - 70° and rotatable 360°.

FORMALIGHTING - Moto-Ola 100

Moto-Ola is a motorised track mounted spotlight.

Features

- Beam angles include Narrow, Medium & Wide.
- CRI 90 as standard (Other options on request).
- CCT options include 3000K, 4000K & full spectrum (Other options on request).
- Tilt up to 100°.
- Pan up to 350°.
- Motorised adjustment for ease of use.







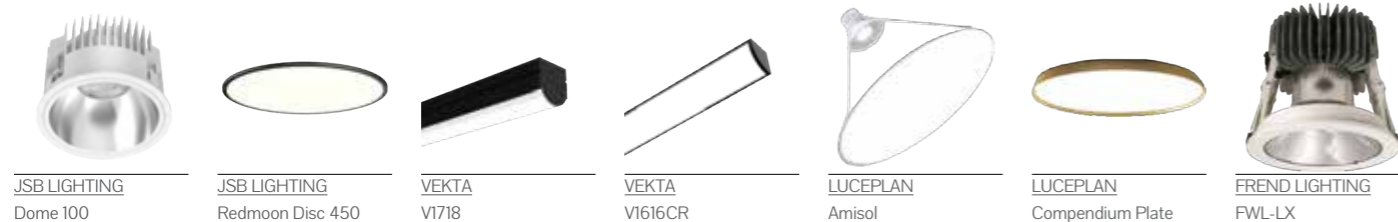
Project: Mariana Hardwick

Boutique & Fitting Rooms

Creating a sale

The private spaces within retail outlets where customers can try on the items that they are considering buying represent a very specific set of challenges for the provision of illumination. These are often ignored and, in all probability, have a significant opportunity cost in lost sales associated with it. To ensure that the colours of clothing are accurately represented it is essential that the lighting conforms to high CRI standards. In addition, lighting needs to be flattering and should prevent the creation of excessively harsh shadows and lines.

FOS Lighting can provide a selection of luminaires that can provide the ideal illumination for the changing room which will act as a "silent sales person" by ensuring that customers see themselves, in the outfit, in the best possible light.



JSB LIGHTING
Dome 100

JSB LIGHTING
Redmoon Disc 450

VEKTA
V1718

VEKTA
V1616CR

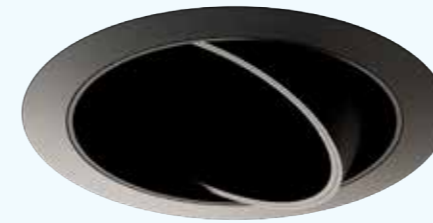
LUCEPLAN
Amisol

LUCEPLAN
Compendium Plate

FREND LIGHTING
FWL-LX

FORMALIGHTING - Micron

Lamp body in cast aluminum and fixing ring in steel. Fixing ring can be installed independently.



Features

- Black or White Powdercoat finish.
- CRI 90
- Tiltable vertically 0°-35° and rotatable horizontally 350°.
- Reflector options include Matt, White & Black.
- CCT options include 3000K & 4000K others available.
- Dimming Options: 0-10V Dim, DALI, Phase, CASAMBI.

VEKTA - V1718

V1718 is a micro linear luminaire which offers a variety of options.

Features

- Tilt adjustable mounting clips on request.
- Remote driver.
- CRI >90 or 95.
- White, black & silver as standard colours, custom colours available on request.
- Beam angles include 10°, 30°, 60°, 90°.



LUCEPLAN - Amisol

With the options of a white translucent film or a metallised mirror membrane, the amisol is unique luminaire which either diffuses the light or reflects it.



Features

- Aluminium structure.
- Disk diameter options include 75cm & 110cm.
- Disk colours include Opal, Gold or Silver.

JSB LIGHTING - Redmoon Disc 450

Ranging from 350mm to 900mm, the circular low profiled luminaire offers a unique aesthetic while illuminating the dressing room. 4 styles: Classic & Disk bodies and both have a Standard or Crater version (decorative trim).

Features

- 18W or 26W system power modules.
- Up to 3200 module lumens.
- Cable, Rod or Surface mounted options.
- Black or white options available.
- Direct or Indirect options available.
- 3000K or 4000K options.





Courtesy of: Formalighting

Showcase Lighting

Lighting Valuables

Strict control helps to meet the requirements of ideal display illumination. Managing glare and carefully controlling the spread of illumination onto single items of jewellery or other small, valuable items requires highly specialised luminaires that can deliver a range of outcomes in a miniaturised form factor. Only a limited number of manufacturers have succeeded in producing specifier-grade luminaires and associated accessories that are ideally suited to this application.

FOS Lighting proudly represents major participants in this market in Australasia. These luminaires are low voltage track compatible, which assists with heat management, while being LED based means that they emit little or no radiation in the UV and IR bandwidths, ensuring that they will not damage delicate miniature merchandise while providing controlled illumination that displays it to perfection. This is an essential point of difference to arrest and attract foot traffic when operating in the highly contested luxury goods markets.



LJUSEDESIGN
Gizmo

LJUSEDESIGN
Gimmick

LJUSEDESIGN
Gizmo Zoom

FORMALIGHTING
Twino

FORMALIGHTING
Teatro

FORMALIGHTING
Moto-Zero Compasso



LJUSEDESIGN - Gizmo

Gizmo is a miniature spotlight with an excellent colour rendition.

Features

- Dimmable from the wall or the app.
- Built in dimmer from 0-100%.
- Toolless lens interchange.
- Track or Ceiling Mounted.
- CCT Options: 2000K, 2700K, 3000K, 4000K.
- Swivels 365° and tilts 90°.
- Colour options include: Grey, Black, White or Brass.
- CRI > 90.

LJUSEDESIGN - Gimmick

Gimmick has a minimal design and is well suited to display casing illumination.

Features

- Built in dimmer (Pico Track only).
- Toolless lens interchange.
- 1W or 2W Options.
- CRI > 90.
- Track or Rod Mounted.
- CCT Options: 2700K, 3000K, 4000K.
- Swivels 365° and tilts 90°.
- Grey or Black finishes.



FORMALIGHTING - Twino

Twino is a recessed low voltage miniature spot designed & developed for retail & showcase displays. Twino delivers high-intensity values and remains almost invisible even from a short distance.



Features

- CRI 97.
- CCT options include 2700K, 3000K, 3500K, 4000K.
- Beam angles include elliptical (22° x 47°), 21° & 29°.
- Remote driver.
- Black, White or Gold finishes available.

FORMALIGHTING - Teatro

Formalighting Teatro ultra-miniature track and stand-alone luminaire system.

Features

- Recessed or surface mount options support reverse polarity.
- Teatro 12, fixed elliptical beam options, available as twins, single surface and pendant options.
- Teatro 30, zooms from 8° to 80°; a range of filters, honeycombe and barn doors with magnetic fixing.
- Integrated dials enable easy adjustment of the beam angle and dimming.
- Horizontal rotation of 330° and a vertical range of 0° to 90°.





Project: New World Thorndon

Supermarket

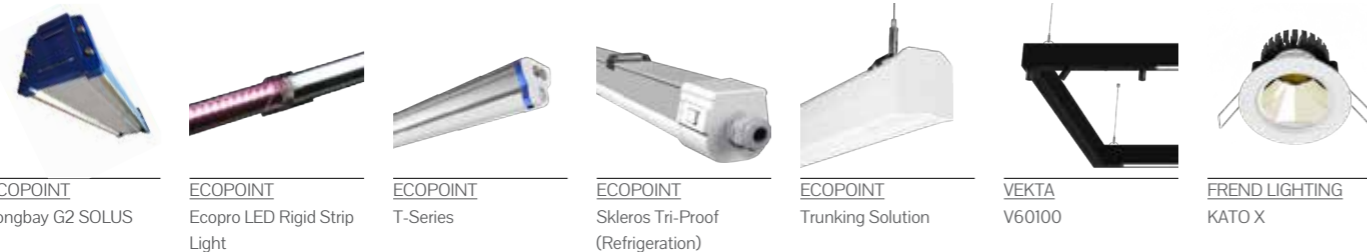
High traffic, exceptional illumination

Supermarkets require a range of lighting solutions, based on the nature of the products on display. When considering a bakery, lighting needs to complement and enhance the nature of the baked goods. Due to that fact, the illumination tends to the “warm” end of the white spectrum with a temperature below 3000° Kelvin recommended for this department. At the other end of the light temperature spectrum is the refrigerated section where the illumination tends to the “cold” end of the white spectrum with a temperature above 5500° Kelvin, which serves to enhance the refrigerated nature of the goods.

Depending on the nature of the ceilings/display systems and desired lighting outcomes throughout the various departments, a range of luminaires can be used ranging from LED Panels to downlights as well as linear solutions; micro, macro or flexible – suspended, recessed and surface mounted.

The illumination in the main hall of a supermarket should be close to daylight in frequency, FOS Lighting recommends around 4000° Kelvin as being the target range with a high CRI as this will help to display fresh goods as well as packaged products to their best advantage. In addition to the colour, the illumination should also be directional and diffused, ensuring that light reaches the content of the shelves without blinding customers. To this end FOS Lighting has a range of speciality products that provide light that washes the walls of big box style structures while providing even light on the floor and across all the levels of the shelving.

When dealing with supermarkets and stores that have relatively low ceilings, FOS Lighting can provide trunking solutions that incorporate optics which permit asymmetrical light distribution, ensuring even light reaches all the levels of the shelving. If using LED Tube replacements, the rotatable end-caps permit a limited level of directionality of illumination as well.



ECOPOINT - Ecopro LED Rigid Strip Light

Ecopro is an excellent choice for applications where colour plays a key role in the sale of the merchandise.



Features

- Extruded aluminium frame.
- Polycarbonate diffuser.
- Surface or Wall Mounted.
- IP40.

FRENZ LIGHTING - KATO X

Kato X is a family of downlights which have a variety of LED modules dedicated to enhancing the colour of items.

Features

- Artist, Vibrant, Beauty & Standard series led modules.
- CRI of 97 on Vibrant & Beauty modules.



ECOPOINT - Trunking Solution

The Ecopoint Trunking solution offers lighting designers a wide variety of flux packages, optics and structural options. With its long life components and robust construction, it is ideal for dynamic retail and commercial environments.



Features

- IK02.
- IP20.
- Surface or Suspended mounting.
- 3000K, 4000K or 5000K CCT options.
- Non-Dim or DALI.
- White or Black finish options.

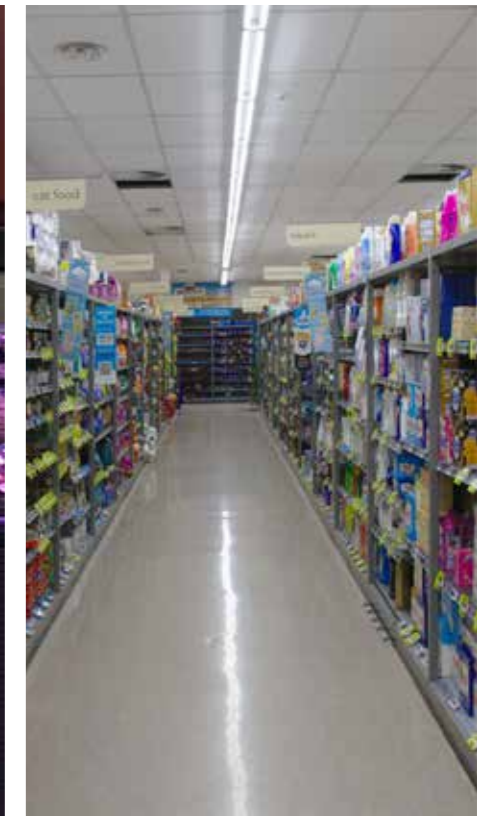
ECOPOINT - Skleros Tri-Proof (Refrigeration)

The Ecopoint Skleros Tri-Proof (Refrigeration) is designed specifically for high-demand environments and to resist damage.

Features

- IK08.
- IP65.
- Polycarbonate body with a polycarbonate diffuser.
- From 3,540 (small variant) Up to 10,010 lm (large variant).
- Operating temperature between -20° and 40°.
- CCT 4000K.







Project: Honda Wellington

Sales & Reception

Making the sale

To effectively do transactions, light levels need to be enhanced with suggestions of around 500 lux as the target level, horizontal on the working plane, according to NZS 6703. What needs to be kept in mind is that a significant amount of these transactions are now performed digitally so the illumination needs to avoid creating reflections that will make it difficult to view screen-based operations. In this regard FOS Lighting represents a range of linear products that incorporate adaptable optics ensuring that they can deliver the requisite illumination on the working surfaces. These luminaires can be suspended, rod-mounted, surface mounted or recessed depending on the requirements of your design aesthetic.

When considering installing illumination above check-out desks, especially when the POS system uses barcode scanners to attribute items to a transaction, it is essential to ensure that luminaires do not produce flicker. Excessive flicker will interfere with the operation of the scanners and could affect the health and well-being of the staff that work under the affected luminaires.

In addition to illumination, providing a space that permits ease of communication when there is significant background noise, can be enhanced through the use of materials that act to create sound absorption baffles. Luceplan has developed a number of luminaires that double up to create spaces that permit an enhanced ability to decode sounds in the frequency range of human language.



VEKTA - V60100

VEKTA V60100 provides a breadth of opportunity for lighting creativity with its wide variety of options and customization features.

Features

- Emergency options available.
- Welded joints available on request.
- Available optics include Opal Diffuser, various Linear Lenses, Track, Louvered & Mini Spots.
- Mounting Options include Surface, Suspended, Recessed & Wall Mounted.



LUCEPLAN - Hope

Hope is an incredibly light and easy to dismantle pendant, which revives the magic of traditional chandeliers while incorporating modern design and materials. Hope creates a spectacular sparkling atmosphere as well as a talking point due to its beauty and distinctive design.

Features

- 4 Different modules.
- Variety of wattage options, dependant on fitting module.



LUCEPLAN - Silenzio

Silenzio is the ideal collaboration between good lighting design and materials. The fabric used allows for the light shade to minimize noise pollution, while also adding to the decor of its environment.

Features

- Reduce noise pollution.
- Available in 90cm, 120cm & 150cm diameter options.
- Suspended fitting.
- Custom textile colours available on request.



JSB LIGHTING - NOVA-P XS

NOVA-P XS is the thinnest module in the NOVA family with a diameter of 40mm. With a 9W LED module and multiple beam angles, NOVA-P XS is an excellent choice for above counter tops, tables & sales desks.

Features

- Aluminium Housing.
- 9W LED Module.
- CRI > 80 or 90.
- CCT Options: 2700K, 3000K & 4000K.
- Beam angles: 18°, 24°, 36°.
- Honeycomb mesh for glare reduction.







Project: Roof Logic

Storage & Cold Rooms

The handling of extra stock

Storage spaces need lighting that suits the method of storage & merchandise, it also needs to assist staff in finding products in a timely and effective manner. In this regard the illumination should avoid glare while delivering enhanced intensity – it would be contraindicated to blind staff when entering or leaving the space. However, they must be able to accurately read labels and determine colours as required. It becomes a matter of customer service levels which determines the choice of luminaire in the part of a store that customers do not ever visit.

Cold Rooms require illumination that can withstand extreme conditions, and here LED luminaires have a distinct advantage. They do not produce a significant amount of waste heat as compared to Metal Halide and Fluorescent fittings, which put a strain on the chiller plant and thus wastes energy, while the lower ambient temperature has a positive impact on LED luminaire longevity. There are a number of luminaires specifically designed to provide optimal performance in challenging environments. Finally, LED fittings are energy efficient and some come with on-board motion detection and proximity sensors which further enhance energy savings.

FREND LIGHTING - Onyx 2

ONYX 2 is a circular LED Highbay which has a variety of outputs, making it ideal for all storage areas.



Features

- IK08.
- IP65.
- Up to 22500 lumens.

ECOPOINT - Linear High Bay G2

A high output LED linear alternative to standard metal halide or T5 high bays.

Features

- IK10.
- IP65.
- 4 Module sizes.
- 80W-299W options available.
- Up to 38500 lumens.



FREND LIGHTING - CWP

CWP is an extremely versatile weather proof fixture.

Features

- IK07.
- IP65.
- Self cooling, Zhaga certified LED boards.
- From 1220 lumens (1x8W) to 8800 lumens (4x14W).
- Surface or suspended via s/steel spring fixing brackets or s/s triangle.
- 3000K & 4000K CCT options.
- Ambient Temperature -25° to 45° C.



SECURLITE - Duropark LED

A sealed LED Strip Light

Features

- IK10.
- IP65.
- 1277mm or a 1577mm modules.
- 31W or 37W options
- 3000K or 4000K options.



FREND LIGHTING
Onyx 2



FREND LIGHTING
SPF-LED



FREND LIGHTING
ETW



ECOPOINT
Long Bay G2



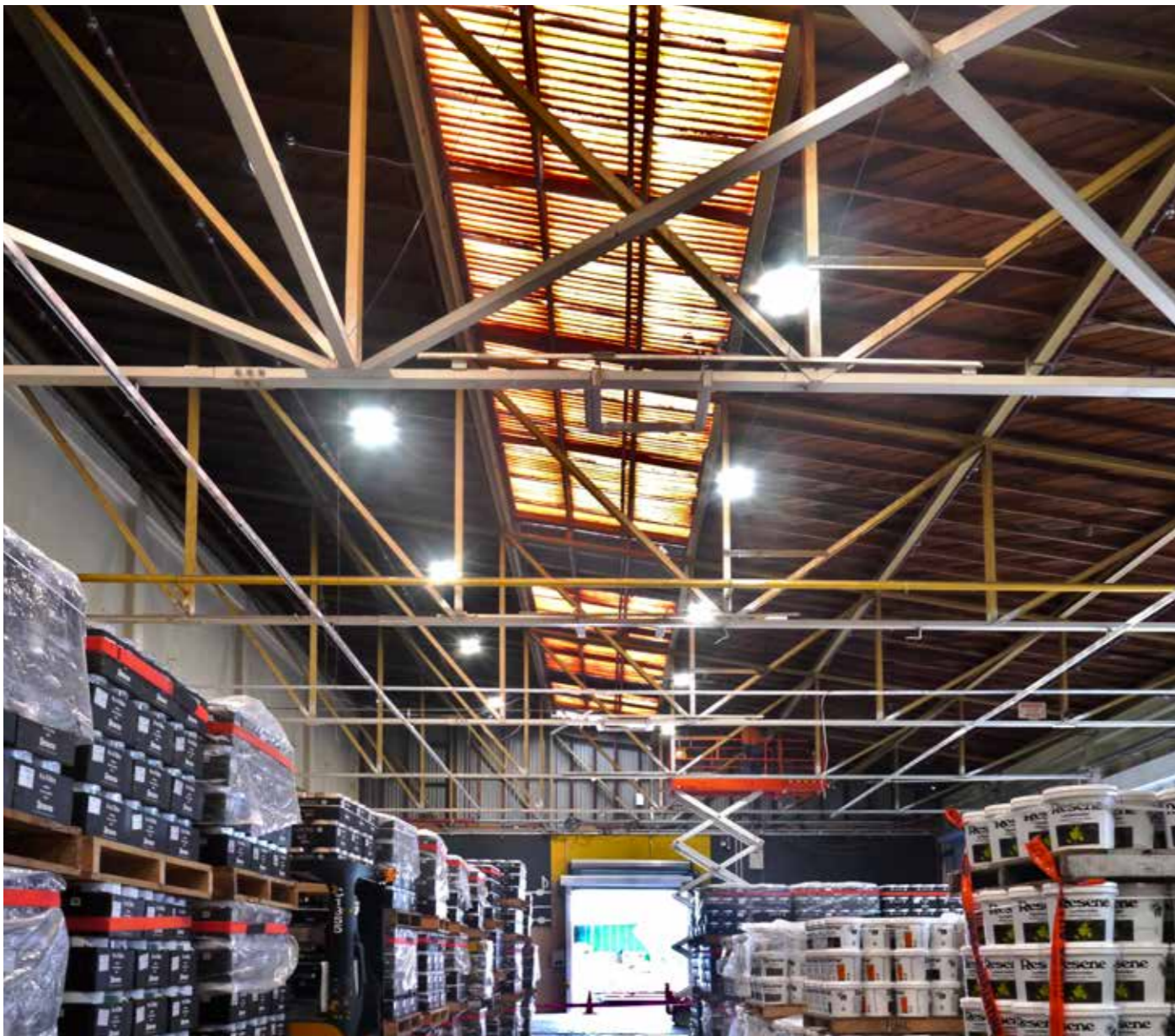
ECOPOINT
High Bay G3



ECOPOINT
Linear High Bay G2



SECURLITE
Duropark LED





Project: 31 Queens Street

Amenities

Clean & fresh

When talking of the facilities provided to customers in shopping complexes the standard of the fixtures and fittings is critical to providing a sense of the overall "look and feel" that customers expect. It is sometimes overlooked or a source of disconnect when the amenities are maintained by the landlord/property management company while the stores are designed and shop fitted by the brand and the two organisations have different strategies.

FOS Lighting represents a broad spectrum of luminaires with IP ratings that make them suitable for use in spaces that have high humidity and intensive chemical cleaning. These luminaires provide a complete solution for the ambience required to ensure that the desired look and feel is carried throughout a location at a competitive price point. A definite advantage when negotiating a comprehensive lease.



SECURLITE - Bang

Bang is a wall or ceiling mounted fitting. Designed to meet IK11 and IP55 standards, Bang is a perfect solution for environments subject to high traffic areas where vandalism may occur.



Features

- IK11.
- IP55.
- Reinforced polamide Base and polycarbonate diffuser.
- Up to 2500lm.
- CRI >80.
- CCT options include 3000K or 4000K.

VEKTA - Flex

VEKTA FLEX is a family of flexible LED Strips set in silicone. This makes them useful in exterior and interior settings for atmospheric lighting or architectural feature lighting.

Features

- IP68.
- IK08.
- Vertical and Horizontal Flex directions.
- 11 available profiles.



FORMALIGHTING - Aqualuce Square

Aqualuce square is a square recessed downlight, ideal for areas where there is a high moisture content such as spas, bathrooms, and saunas.



Features

- IP54.
- White or Polished chrome finish.
- CCT options include 3000K or 4000K.

SECURLITE - Senspot

Senspot is an extra-compact LED Downlight with detection. Featuring an IK rating of 10 and an IP rating of 44 or 65, Senspot is an exceptional solution for high traffic areas where moisture and vandalism are considered factors.

Features

- IK10 (Standard), IK11 vandal resistant module.
- IP44 or IP65 modules (Remote IP20 Driver).
- CCT Options available 4000K (Standard) & 3000K (On request).





Project: ECLATEC

Carpark

Description

Car parks come in many forms and in some instances can represent a significant amount of the energy consumption allocated to lighting in a shopping centre. With our extensive experience in the implementation of management systems and associated weatherproof luminaires, we can provide a total underground or multi-level parking lighting solution that can integrate daylight harvesting, occupation detection, and motion detection to ensure that there is sufficient illumination to ensure safe wayfinding. Energy waste is minimised and the longevity of luminaires is ensured by careful management of power usage at the individual fitting level.

Outdoor parking facilities represent a different list of challenges and here the superior light cut-off design, Dark Sky compatible luminaires, and integrated remote management systems that FOS Lighting represents in Australasia ensure that we can provide a state-of-the-art solution that will ensure the requisite safety and security of your clients and staff while minimising the discomfort of your neighbours and negative impact on local wildlife.



ECOPOINT
Area Light G2

ECOPOINT
Skelos Tri-Proof

FREND
CWP

ECLATEC
Pixel

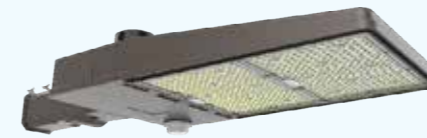
ECLATEC
Zelda

ECLATEC
Keo

SECUROLITE
Fila 2

ECOPOINT - Area Light G2

Lighting large areas economically is comfortably within reach when using the Area Light G2.



Features

- IK08 (Pending).
- IP66.
- 7 Wattage options.
- Up to 41,900 lumens.
- Pole or surface Mounted.
- CCT options include 3000K, 4000K, 5000K, 6000K.

ECOPOINT - Skelos Tri-Proof

Skelos Tri-Proof has a rugged construction with high protection ratings, as well as featuring a modular design, flexibility and tool free installation.

Features

- IK08.
- IP65.
- 4 different modules.
- Up to 10,010 lumens.
- Surface mounted or suspended.
- Switchable Non-Dim (Standard), DALI is an option.
- 4000K.



ECLATEC - Pixel

Eclatec Pixel is a pole mounted luminaire designed for illuminating large open spaces such as rooftops and outdoor car parks.



Features

- IK09.
- IP66.
- Extruded Silicone Gaskets.
- Any finish colour available.

ECLATEC - Keo

Keo is a decorative urban pole mounted luminaire, designed for high traffic public spaces.

Features

- IK10.
- IP66.
- Extruded Silicone Gaskets.
- Any finish colour available.





FOS Projects

Australia

Bank SA
Boffi Studio
BP Stations (various accross Australia)
3/6 Boutique
Cartier Brisbane
Chaumet
Dior
Earp Bros
Edition Roasters Piaget
Empire Village
Flower Shop
Hamilton Reach
Hermes
Hoyts Entertainment Quarter
Kam Power
Kayrouz Bridal
Kingston Butter Factory
Lions Richlands
Mackay Housing Service centre
Mariana Hardwick
MC Cyclery
Micheal Hill Stores (Various)
Molten Store Chermside
Nespresso
North Lakes Lot 958 Large Format Retail Centre
Optus
Oroton
Pacific Fair
4 Parramatta Square
5-7 Parramatta Square
Podesta Airlie Beach
Queens Wharf Brisbane
SAAB Bundanba
Service NSW

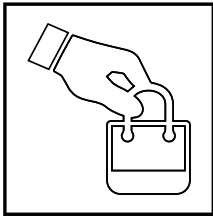
Shell Moorooka Service Centre
Southgate Shopping Centre
South Village
Star City
St George Bank
Stockland Britinya
Stylecraft
Sunnbank Hills Shoppingtown Internet Café
Supa Centre Logan
Supa Centre Maroochydore
Redbank Plains Retail Centre Argyle Base Build
Redbank Plains Retail Centre
Redbank Plaza Shopping Centre Autowalks
The Flower Shop Brendale
Toombul Shopping Centre
Uscari
Vacheron Constantine
Vic Meats
Westfield Garden City
Westpac (Various Stores)
Whites Hill Shopping Centre

New Zealand

Animates
Countdown Mt Wellington Parking
Fresh Choice Greytown
Hannahs Shoes
Honda Wellington
Honda North Shore
Liquorland
New World Aokautere
New World City
New World Thorndon
North Shore Toyota
NW Chaffers Open Car Park
NW Churton Park Wines
NW Silverstream
Pak 'n Save Lower Hutt
Pak 'n Save Lower Hutt Parking (open and enclosed)
Pak 'n Save Upper Hutt
Pak 'n Save Silverdale

Pak 'n Save Silverdale (Fuel)
Plumbing World
4 Square Lake Tekapo
Toyota North Shore





FOS

lighting

info@foslighting.com.au

foslighting.com.au

1300 241 087

FOS Lighting reserves the right to make any changes without prior notification