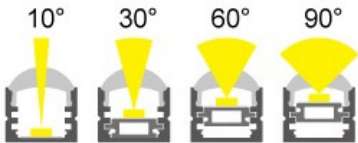
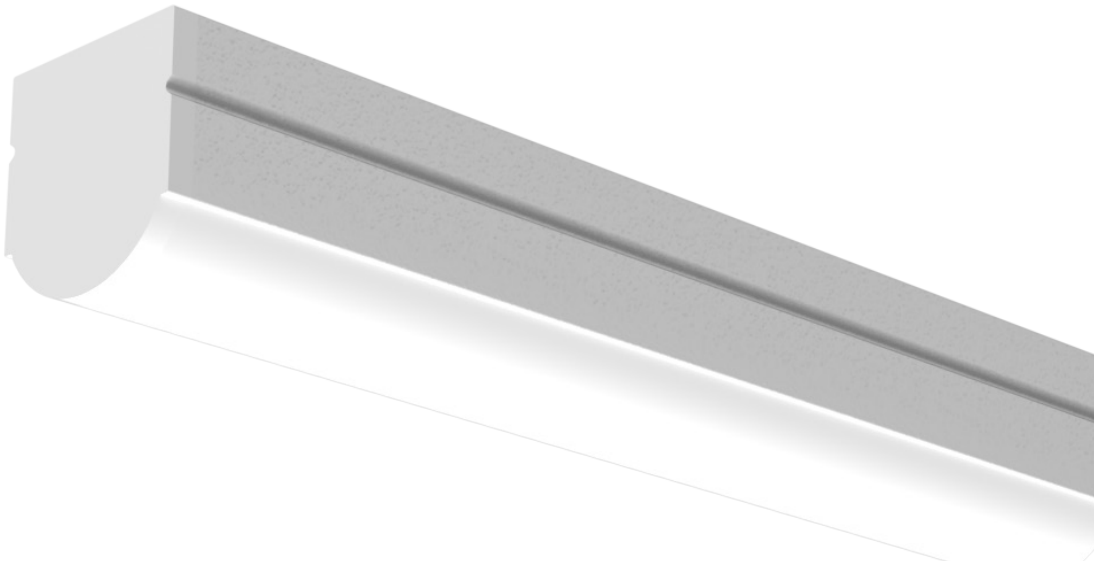


VEKTA V1718



Key Features

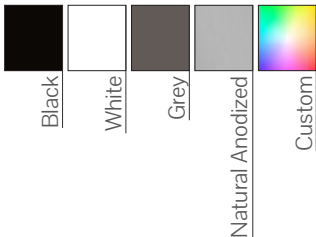
- Even light distribution
- Complies with relevant Australian Standards
- Diverse possibilities
- Compact profile
- Remote Driver
- Tilt adjustable mounted clips on request

Compliance



*Cyanosis compliant on request

Colour Options



Code

Example:

V1718-S2090400DDO10-2400

Product Code	Mounting	Power	CRI	CCT	Optics	Driver	Finish	Length
V1718	S - Surface Mount	05 - 4.8 W/m 10 - 9.6 W/m 15 - 14.4W/m 20 - 19/2W/m	90 - CRI>90 95 - CRI>95	27 - 2700K 30 - 3000K 35 - 3500K 40 - 4000K 50 - 5000K 65 - 6500K TW - 2700-6500K RGB RGBW3K RGBW4K	10 - 10° 30 - 30° 60 - 60° 90 - 90°	DO - Non-Dim DA - DALI-Dim SW - Switch-Dim CA - Casambi T2 - Tunable White	10 - Black 11 - White 75 - Gray 79 - Anodised CU - Custom	- xxxx mm

Luminous flux figures based on Opal, 4000K, CRI>90 version

Mounting

Surface Mounted (S)



Mounting Clip



Dimensions

