

ELF

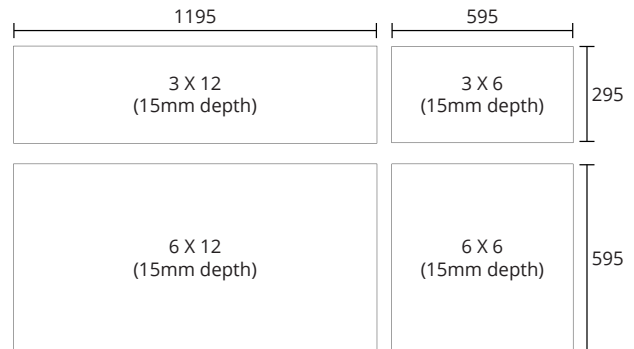
LED PANEL



Key Features

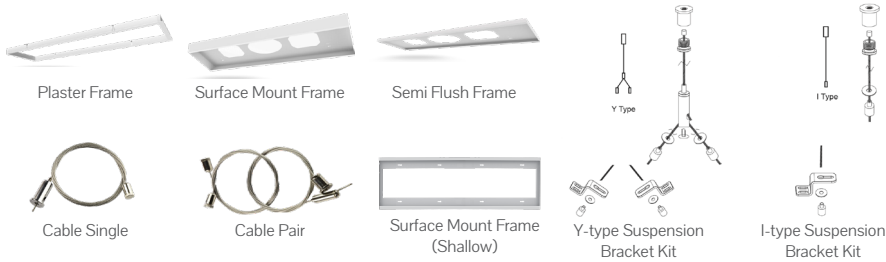
- Slim edge lit LED Panel.
- L70 B50, 50,000 hours.
- CRI ≥ 80.
- Input Voltage at 220 - 240V.
- Available in 4 different sizes.
- Mounting types include, semi flush, surface mount, plaster and T-bar.
- Cyanosis option available - UGR<19 COI <1.1
- Tri-colour switchable option available
- Air Handling frame -IP20

Dimensions



*Sizing is for T-Bar version only. Contact Frend Lighting for other mounting sizes.

Accessories



Code

ELF-AR/24/12X3/40/ND

Product Series		Installation Type		Wattage & Nominal Dimensions				CCT		Driver		
ELF	LED Panel (17W, 32W & 50W / 4000K, Tri-colour)	TB	T-bar (Standard)	17	6x3	600x300	1500lm	40	4000K	ND	Non Dimming	
		PB	Plaster	32	6x6	600x600	3400lm					
ELF-CY	Cyanosis (34W / 4000K only)	SM	Surface Mount	12x3	1200x300	3400lm	5700K	Tri	3000K / 4000K / 5700K	DALI	DALI Dimming	
		SF	Semi Flush	50	12x6	1200x600						5000lm
		SMS	Shallow Surface Mount	12x3	Cyanosis only	2900lm						
				34	6x6	Cyanosis only						2900lm
		AR	Air Handling (1200x300 ONLY)	24	12x3	1200x300						3200lm
		30	12x3	1200x300	4000lm							
		34	12x3	1200x300	4550lm							
		38	12x3	1200x300	5100lm							

Luminous flux figures based on Opal, 4000K, CRI>80 version
 Specifications subject to change without notice
 See Technical Information Table for configurations options

ELF

LED PANEL ACCESSORIES

Plaster Frame

- Frame can be installed into plaster ceilings.

Specifications	6x3	6x6	12x3	12x6
Length	625mm	625mm	1225mm	1225mm
Width	325mm	625mm	325mm	625mm
Depth	40mm	40mm	40mm	40mm
Cut-out	610x310mm	610x610mm	1210x310mm	1210x610mm



Surface Mount Frame (Deep)

- Frame to be mounted in solid concrete ceilings.
- Designed to house both LED panel and driver.
- White powder coat finish.

Specifications	6x3	6x6	12x3	12x6
Length	600mm	600mm	1200mm	1200mm
Width	355mm	655mm	355mm	655mm
Depth	66mm	66mm	66mm	66mm



Surface Mount Frame (Shallow)

- Frame to be mounted in solid concrete ceilings.
- Designed to house LED panel only (driver must be remote).
- White powder coat finish.

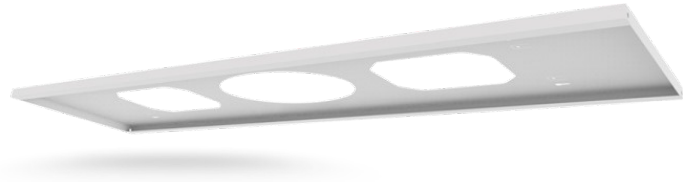
Specifications	6x3	6x6	12x3
Length	600mm	600mm	1200mm
Width	320mm	620mm	320mm
Depth	30mm	30mm	30mm



Semi Flush Frame

- Frame to be mounted on plaster.
- Designed to house LED panel only (driver must be mounted remotely).
- White powder coat finish.

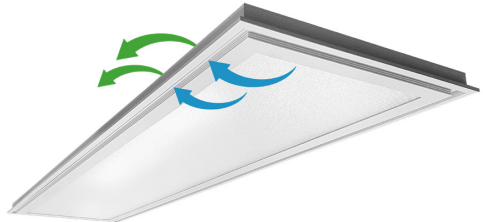
Specifications	6x3	6x6	12x3	12x6
Length	600mm	600mm	1200mm	1200mm
Width	320mm	620mm	320mm	620mm
Depth	18mm	18mm	18mm	18mm



Air Handling Frame

- Special frame designed for air handling
- IP20
- 4000K ONLY

Specifications	12x3
Length	1195mm
Width	295mm
Depth	20mm



Wire Suspended Kits

- 1.8m wire-steel.
- Suspension height can be adjusted
- Two suspension types available: I and Y. Type I for use with 595mm wide panel, 4 per panel. Type Y for use with 295mm wide panel, 2 per panel.

