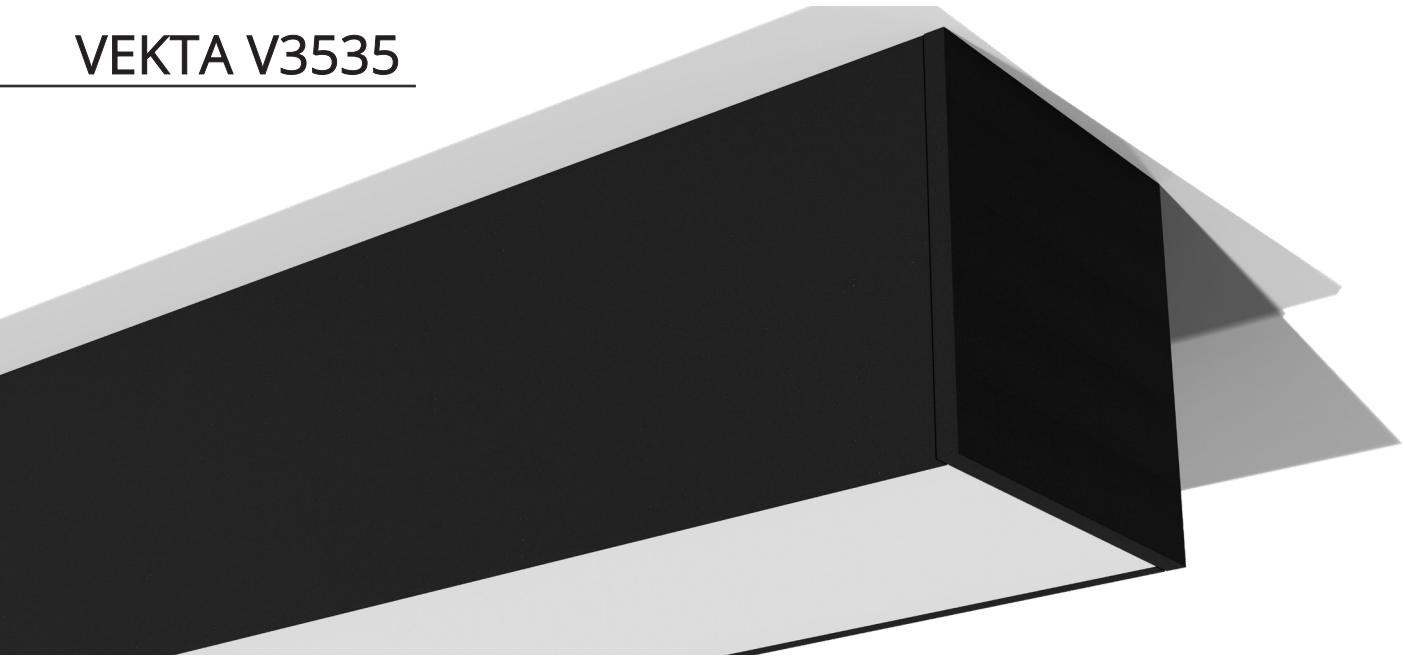


# VEKTA V3535



## Key Features

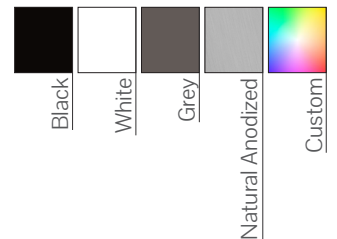
- Even light distribution
- Easy Installation
- Complies with relevant Australian Standards
- 24V high CRI LED strip pre-installed
- Remote Driver
- IP65 rated LED strip available on request

## Compliance



\*Cyanosis compliant on request

## Colour Options



## Code

Example:

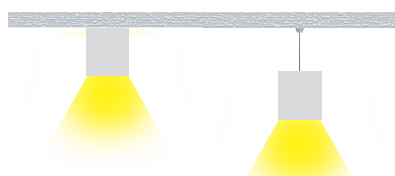
V3535-S059027ODD010-2400

Product Code	Mounting	Power #	CRI	CCT	Optics	Driver	Finish	Length
V3535	S - Surface Mount P/D - Pendant	05 - 4.8 W/m (195 lm/m) 10 - 9.6 W/m (391 lm/m) 15 - 14.4 W/m (586 lm/m) 20 - 19.2 W/m (781 lm/m) 23 - 23 W/m (936 lm/m) 28 - 28 W/m (1172 lm/m)	90 - CRI>90 95 - CRI>95	27 - 2700K 30 - 3000K 35 - 3500K 40 - 4000K 50 - 5000K 65 - 6500K TW - 2700-6500K RGB RGBW4K RGBW3K	OD - Opal	DO - Non-Dim DA - Dali-Dim SW - Switch-Dim CA - Casambi T2 - Tunable White	10 - Black 11 - White 75 - Grey 79 - Anodised CU - Custom	- xxxx mm

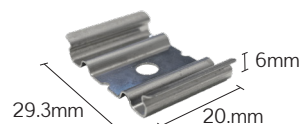
# Luminous flux figures based on Opal, 4000K, CRI>90 version

## Mounting

Surface Mounted (S) Wire Pendant (P)  
Rod Pendant (D)



## Mounting Clip



## Dimensions

