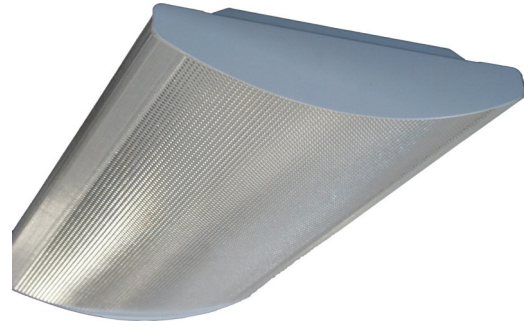


RL-LED

LED RADILUX



FEATURES

- 10 Year Warranty (standard TCI).
- L80 B10.
- Rated 70,000 hours.
- CRI>80.
- Low profile surface mounted luminaire.
- Architecturally attractive curved K19 patterned diffuser with cross-hatched patterned sides.
- Powder coated white metal body - other colours available upon request.
- Suitable for fixing directly to ceiling or may be suspended with chains, wires or rods.
- Suitable for in-line mounting.
- The diffuser can hinge from either side of the body and can be easily removed without tools to allow for maintenance.
- Available in a twin lamp version LED replacements.
- Future proof body.
- Efficacy: up to 162 lm/W.
- Available in DALI Dim or Switch Dim.
- Self Cooling LED Boards.
- Zhaga certified LED Boards.



10 Year Warranty



CRI typically greater than 80



TECHNICAL INFORMATION

Contact Frend for other lighting configurations
Refer to IES files for System Lumens

Configurations	Non Dim System wattage	Combined Board Output (lm)	Nominal Dimensions (mm)
2x8W	22.20	2440 (lm)	600
4x8W	38.10	4880 (lm)	1200
2x14W	34.34	4400 (lm)	600
4x14W	68.52	8800 (lm)	1200

SPECIFICATIONS

Dimensions (mm)	
	Actual / Nominal
Length	625 / 600 1235 / 1200
Width	340
Depth	90

PRODUCT CODE

Example code: RL-LED/2X14/06/K19/40/ND

See Technical Information Table for configurations options.
Specifications subject to change without notice.

Product Series	Number of Boards	Wattage of Boards	Nominal Dimensions	Diffuser type	LED Type	Driver
RL-LED	2	8	06 600	K19 K19 Diffuser	30 3000K	ND Non Dim
	4	14	1200 1200		40 4000K	DALI DALI Dim
						SD Switch Dim