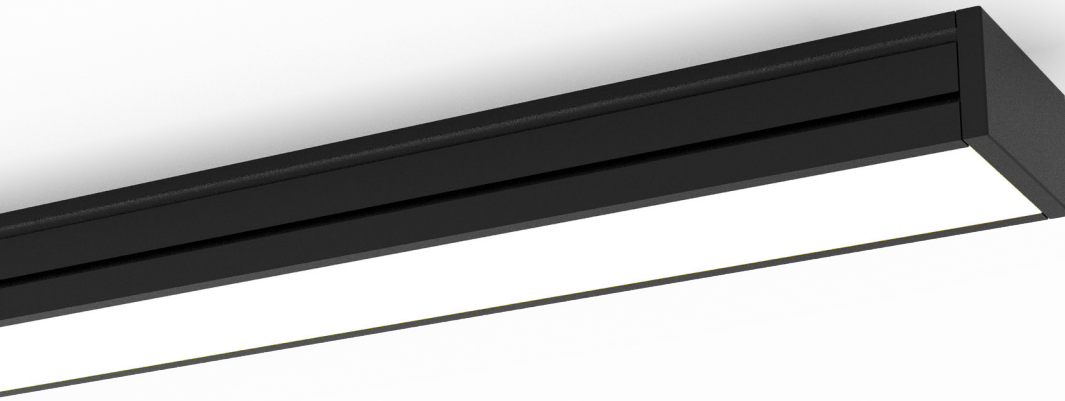


# VEKTA V1910IP



## Key Features

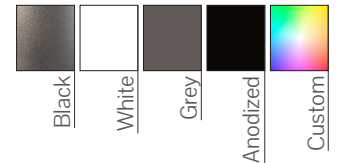
- Even light distribution
- Complies with relevant Australian Standards
- Complete with mounting components
- Remote Driver

## Compliance



\*Cyanosis compliant on request

## Colour Options



## Code

Example:

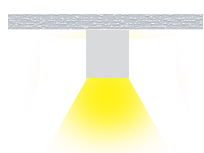
V1610IP-S059027ODD010-2400

Product Code	Mounting	Power #	CRI	CCT	Optics	Driver	Finish	Length
V1910IP	S - Surface Mount	05 - 4.8 W/m (317 lm/m) 10 - 9.6 W/m (634 lm/m) 15 - 14.4 W/m (950lm/m)	90 - CRI>90 95 - CRI>95	27 - 2700K 30 - 3000K 35 - 3500K 40 - 4000K 50 - 5000K 65 - 6500K TW - 2700-6500K RGB RGBW4K RGBW3K	OD - Opal	DO - Non-Dim DA - Dali-Dim SW - Switch-Dim CA - Casambi T2 - Tunable White	10 - Black 11 - White 75 - Grey 79 - Anodised CU - Custom	- xxxx mm

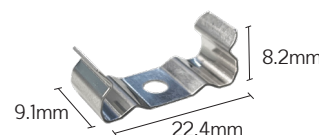
# Luminous flux figures based on Opal, 4000K, CRI>90 version

## Mounting

Surface Mounted (S)



## Mounting Clip



## Dimensions

